

UGECAK..D2 – Medium Voltage Insulated Voltage Transformer

The UGECAK is a medium voltage insulated voltage transformer with screening against electric fields which enables mounting with no phase distance. This product is cast resin insulated and touch-proofed. The transformer is able to measure voltage up to 24kV and has a connection with top conus. The UGECAK is equipped with conical socket connection according to DIN EN 50181. The voltage transformer can be used for switchgear, is maintenance-free and mountable in any position. The secondary terminals are protected with a sealable cover with a degree of protection of IP 20. The product is PTB and GOST approved.



Technical Specifications

Application	Switchgear
Standard	IEC61869-3,
Rated insulation voltage	Up to 24/50/125kV
Maximum rated primary voltage	$22 / \sqrt{3}$ kV
Rated voltage factor	$1,9 \times U_n$ for 8 h; $1,2 \times U_n$ continuous
Secondary voltages	$100 / \sqrt{3}$ V or $110 / \sqrt{3}$ V, other options available on request
Rated output	As required For example 2,5, 5, 10, 15, 30VA
Accuracy class	As required. For example 0,2, 3P
Rated terminal limiting output Sth	500VA Measuring winding 100VA Auxiliary winding
Rated frequency	As required. For example 50-60Hz
Class of insulation	E
Secondary terminals	Protected with a sealable cover, degree of protection IP 20

Ordering Specifications*

Range	Ratio	Winding 1	Winding 2	Article number
12kV	$10.000:\sqrt{3} / 100:\sqrt{3} / 100:3$	0-30VA cl 0.2	100VA 3P	6V2100
12kV	$11.000:\sqrt{3} / 110:\sqrt{3} / 110:3$	0-30VA cl 0.2	100VA 3P	6V2110
24kV	$22.000:\sqrt{3} / 110:\sqrt{3} / 110:3$	0-30VA cl 0.2	100VA 3P	6V4110
24kV	$20.000:\sqrt{3} / 100:\sqrt{3} / 100:3$	0-30VA cl 0.2	100VA 3P	6V4100
24kV	$10.000-20.000:\sqrt{3} / 100:\sqrt{3} / 100:3$	0-10VA cl 0.2	50VA 3P	6V4309
24kV	$11.000-22.000:\sqrt{3} / 110:\sqrt{3} / 110:3$	0-10VA cl 0.2	50VA 3P	6V4319

* To order the customized UGECAK we require several specifications. In the table 'technical specifications' the possibilities per specification are shown.

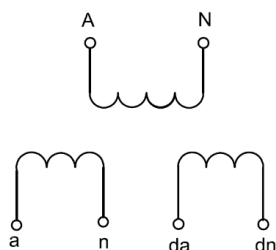
Mandatory

- Rated primary voltage
- Rated secondary voltage
- Rated output
- Accuracy class
- Frequency

Optional

- Other relevant requirements

Wiring Diagram



Dimensions

