

UGECAK..D2 – Medium Voltage Insulated Voltage Transformer

The UGECAK is a medium voltage insulated voltage transformer with screening against electric fields which enables mounting with no phase distance. This product is cast resin insulated and touch-proved. The transformer is able to measure voltage up to 24kV and has a connection with top conus. The UGECAK is equipped with conical socket connection according to DIN EN 50181. The voltage transformer can be used for switchgear, is maintenance-free and mountable in any position. The secondary terminals are protected with a sealable cover with a degree of protection of IP 20. The product is PTB and GOST approved.



Technical Specifications

| | |
|------------------------------------|--|
| Application | Switchgear |
| Standard | IEC61869-3, |
| Rated insulation voltage | Up to 24/50/125kV |
| Maximum rated primary voltage | 22 / $\sqrt{3}$ kV |
| Rated voltage factor | 1,9 x Un for 8 h; 1,2 x Un continuous |
| Secondary voltages | 100 / $\sqrt{3}$ V or 110 / $\sqrt{3}$ V, other options available on request |
| Rated output | As required For example 2,5, 5, 10, 15, 30VA |
| Accuracy class | As required. For example 0,2, 3P |
| Rated terminal limiting output Sth | 500VA Measuring winding 100VA Auxiliary winding |
| Rated frequency | As required. For example 50-60Hz |
| Class of insulation | E |
| Secondary terminals | Protected with a sealable cover, degree of protection IP 20 |

Ordering Specifications*

| Range | Ratio | Winding 1 | Winding 2 | Article number |
|-------|---|---------------|-----------|----------------|
| 12kV | 10.000: $\sqrt{3}$ / 100: $\sqrt{3}$ / 100:3 | 0-30VA cl 0.2 | 100VA 3P | 6V2100 |
| 12kV | 11.000: $\sqrt{3}$ / 110: $\sqrt{3}$ / 110:3 | 0-30VA cl 0.2 | 100VA 3P | 6V2110 |
| 24kV | 22.000: $\sqrt{3}$ / 110: $\sqrt{3}$ / 110:3 | 0-30VA cl 0.2 | 100VA 3P | 6V4110 |
| 24kV | 20.000: $\sqrt{3}$ / 100: $\sqrt{3}$ / 100:3 | 0-30VA cl 0.2 | 100VA 3P | 6V4100 |
| 24kV | 10.000-20.000: $\sqrt{3}$ / 100: $\sqrt{3}$ / 100:3 | 0-10VA cl 0.2 | 50VA 3P | 6V4309 |
| 24kV | 11.000-22.000: $\sqrt{3}$ / 110: $\sqrt{3}$ / 110:3 | 0-10VA cl 0.2 | 50VA 3P | 6V4319 |

* To order the customized UGECAK we require several specifications. In the table 'technical specifications' the possibilities per specification are shown.

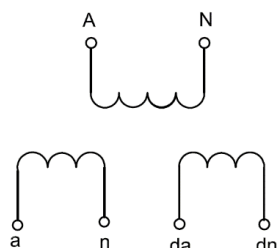
Mandatory

- Rated primary voltage
- Rated secondary voltage
- Rated output
- Accuracy class
- Frequency

Optional

- Other relevant requirements

Wiring Diagram



Dimensions

