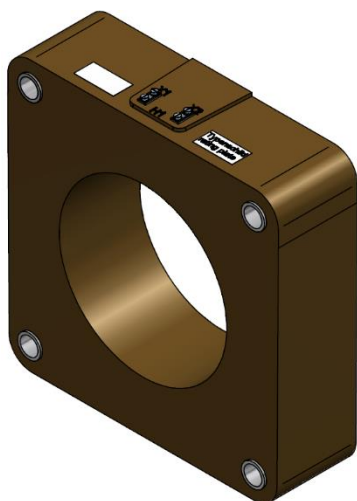


## GSQR410 – Generator Current Transformer

The GSQR is used for protection and measurement, e.g. power generators. When properly installed, the low voltage GSQR can be used also for higher voltage levels as the rated 0,72kV. The special ELEQ generator construction, makes it possible to use the GSQR in applications with shock and/or vibration requirements.



### Ordering specifications\*

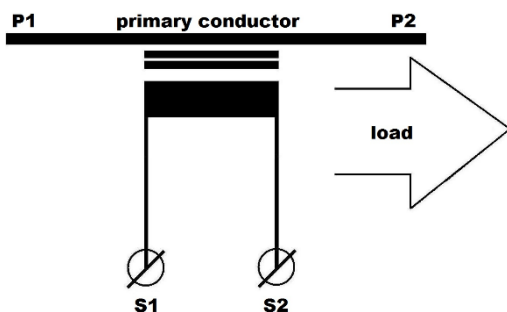
Size	X	Y	Secondary current**	Article number
A	60	66	1 or 5A	On request
B	90	96	1 or 5A	On request
C	120	126	1 or 5A	On request
D	150	156	1 or 5A	On request
E	200	206	1 or 5A	On request
F	250	256	1 or 5A	On request

\* Other dimensions available on request.

\*\* Other secondary current on request.

Design according to IEC61869-2, IEEE C 57.13. Other standards are possible on request.

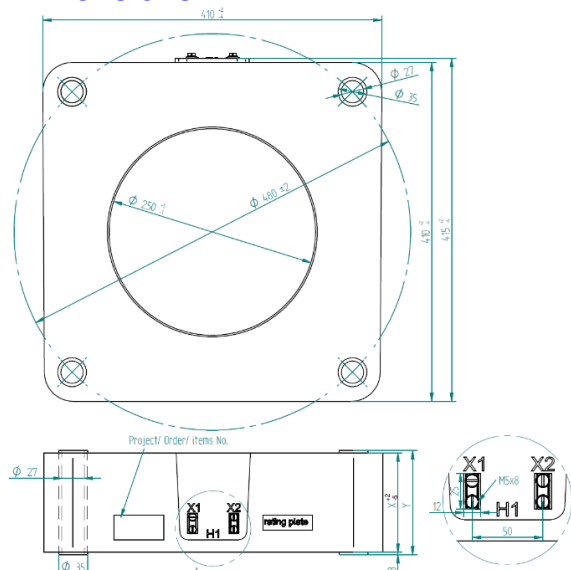
### Wiring diagram IEC 61869-2



### Technical specifications

<b>Environmental conditions</b>	
This product is designed to be safe under the following conditions:	
Location:	Indoor use
Ambient air temperature:	-25°C .. +70°C
Optional low temperature:	-40°C
Optional high temperature:	+80°C
Relative humidity:	5% .. 95%, non condensing
Altitude:	Max. 1000m above NN; at >1000m data required
Protection degree (secondary terminal):	IP00
<b>Application conditions</b>	
Standard:	IEC 61869-2 / IEEE C57.13
IEC 61768-2 specification	
Rated short-time thermal current (I <sub>th</sub> ):	100 x I <sub>n</sub> /1s, max. 100kA/1s
Continuous thermal current (I <sub>cth</sub> ):	120%
Rated insulation level:	0,72/3/-kV
Rated frequency:	50/60Hz
Class of insulation:	E
Rated primary current:	30-15.000A
Rated secondary current:	1A or 5A; other options available on request
Rated output:	As required. For example 2,5, 10, 30VA
Accuracy class:	As required. For example 0,2S, 5P10
Primary window dimensions:	Ø 250 mm
Secondary terminal:	Screw terminals M5 (max. 2,5Nm)

### Dimensions\*



\* Terminal designations according to IEEE is shown. Optional the terminal designation according to IEC (P1 / S1 – S2)

