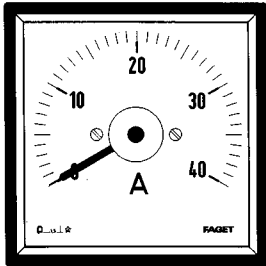


DIS-240 model



Draaispoelmeters model DIS-240

Draaispoel stroom- en spanningsmeter voor gelijkstroom.
Vierkante uitvoering, 240° wijzeruitslag en met vaste schaal.
Voor inbouw volgens DIN 43700 met zwarte frontrand.

Moving coil meters model DIS-240

Moving coil current and voltage meter for direct current.
Square model, 240° pointer deflection and with fixed scale.
For flush mounting according to DIN 43700 with black front frame.

Drehspul Meßgeräte Modell DIS-240

Drehspul Strom- und Spannungsmesser für Gleichstrom.
Quadratische Ausführung, Zeigerausschlag 240° und mit fester Skala.
Einbau nach DIN 43700 mit schwarzem Frontrahmen.

		DIS72-240		DIS96-240		DIS144-240	
		72x72	96x96	144x144			
		67x67	91x91	136x136			
		68 ^{+0,7} x68 ^{+0,7}	92 ^{+0,8} x92 ^{+0,8}	138 ⁺¹ x138 ⁺¹			
		60	60	88			
		110	151	235			
		0,2	0,3	0,9			
μA		REF.	mV	REF.	mV	REF.	mV
	100	3DIQ72	1350	3DIQ96	1350	3DIQ14	1350
	150	3DIQ72	6750	3DIQ96	6750	3DIQ14	6750
	250	3DIQ72	"	3DIQ96	"	3DIQ14	"
	400	3DIQ72	"	3DIQ96	"	3DIQ14	"
	600	3DIQ72	"	3DIQ96	"	3DIQ14	"
mA		REF.	mV	REF.	mV	REF.	mV
	1	3DH033	480	3DH053	480	3DH073	480
	1,5	3DIQ72	2400	3DIQ96	2400	3DIQ14	2400
	2,5	3DIQ72	"	3DIQ96	"	3DIQ14	"
	4	3DIQ72	"	3DIQ96	"	3DIQ14	"
	5	3DIQ72	"	3DIQ96	"	3DIQ14	"
	6	3DIQ72	"	3DIQ96	"	3DIQ14	"
	10	3DIQ72	160	3DIQ96	160	3DIQ14	160
	15	3DIQ72	"	3DIQ96	"	3DIQ14	"
	20	3DH031	"	3DH051	"	3DH071	"
	25	3DIQ72	"	3DIQ96	"	3DIQ14	"
	40	3DIQ72	"	3DIQ96	"	3DIQ14	"
	50	3DIQ72	"	3DIQ96	"	3DIQ14	"
	60	3DIQ72	"	3DIQ96	"	3DIQ14	"
	100	3DIQ72	"	3DIQ96	"	3DIQ14	"
	150	3DIQ72	"	3DIQ96	"	3DIQ14	"
250	3DIQ72	"	3DIQ96	"	3DIQ14	"	
400	3DIQ72	"	3DIQ96	"	3DIQ14	"	
600	3DIQ72	"	3DIQ96	"	3DIQ14	"	
A		REF.	mV	REF.	mV	REF.	mV
	1	3DIQ72	160	3DIQ96	160	3DIQ14	160
	1,5	3DIQ72	"	3DIQ96	"	3DIQ14	"
	2,5	3DIQ72	"	3DIQ96	"	3DIQ14	"
	4	3DIQ72	"	3DIQ96	"	3DIQ14	"
	6	3DIQ72	"	3DIQ96	"	3DIQ14	"
	10	3DIQ72	"	3DIQ96	"	3DIQ14	"
	15	3DIQ72	"	3DIQ96	"	3DIQ14	"
	25	3DIQ72	"	3DIQ96	"	3DIQ14	"
	40	3DIQ72	"	3DIQ96	"	3DIQ14	"
60	3DIQ72	"	3DIQ96	"	3DIQ14	"	