

PD14 PROGRAMMER

FEATURES:

LPConfig
program

PD11
program

INPUTS:

USB

OUTPUTS:

RJ-11

GALVANIC ISOLATION:

USB

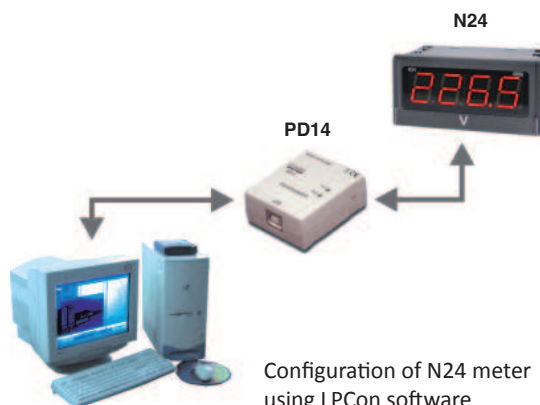
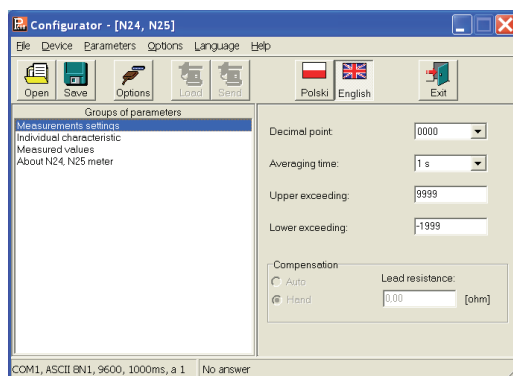
RJ-11



- Destined to program parameters in selected digital meters.
- Enables connection of meters to a PC using the USB interface.
- The device programming is carried out using free LPCon program.
- LPCon program enable:
 - change of device parameters,
 - storage and readout set up parameters to the file,
 - configuration of any device with the MODBUS protocol.

EXAMPLE OF APPLICATION

LPCon program



Configuration of N24 meter using LPCon software and PD14 programmer.

TECHNICAL DATA

Baud rate	9600 bps
Information unit	8N1 (8 data bits without the even parity bit, 1 stop bit)
Overall dimensions	43 x 51 x 20 mm
Wire length	1.5 m

RATED OPERATING CONDITIONS

Supply voltage	Collected from the device and the USB port	
Temperature	ambient: 0...23...50°C	storage: 0...70°C
Relative air humidity	< 95%	inadmissible condensation
Housing protection grade	IP20	
Operating position	any	
Galvanic isolation	1000 V	

ORDERING CODE

PD14 - X

Acceptance tests:

without extra requirements	8
with an extra quality inspection certificate	7
acc. to customer's request*	X

* after agreeing with the manufacturer

ORDER EXAMPLE

The code **PD14 - 8** means a programmer without extra requirements.