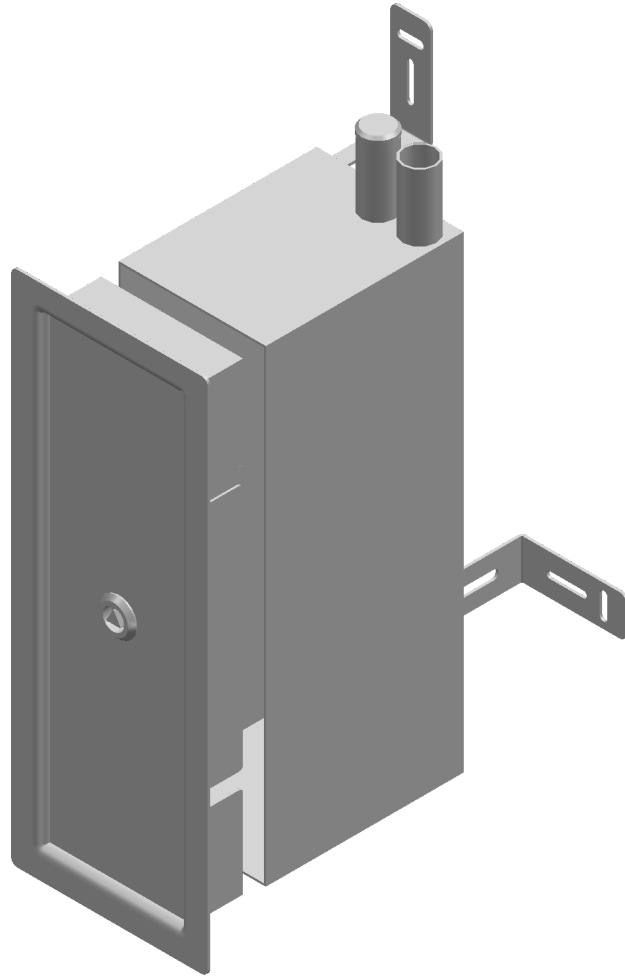
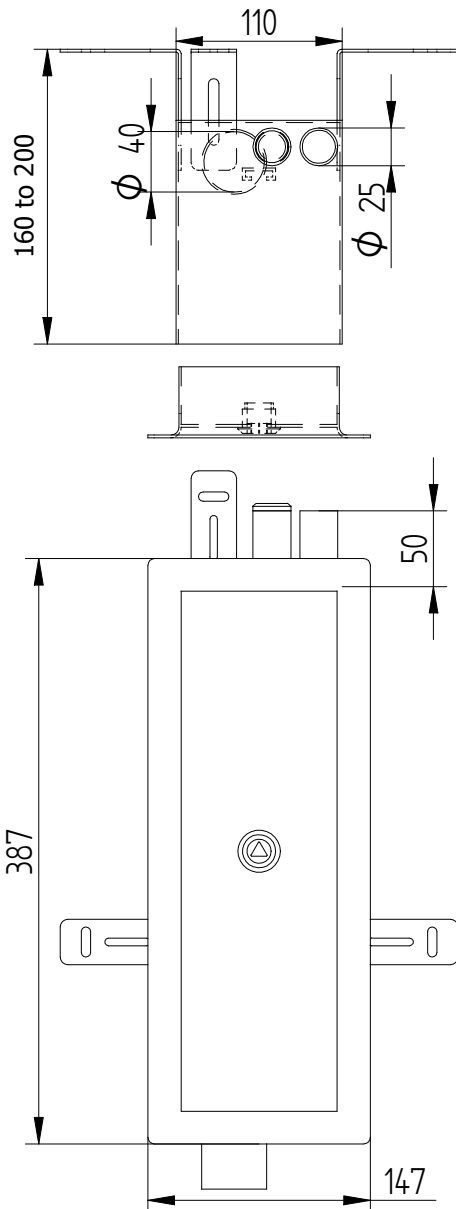


Stainless wall mounting box for LS-94 2RVS-50



Specifications

Type	: Stainless wall-mounting box
Article number	: 2RVS50

Details

: All Ral-colours possible with mountable window

Technical Specifications

Material	: Stainless steel 304 1,25mm frame and door 2mm
Suitable for	: 1x LS94
Colour	: RAL 7032
Dimension	: 387x147 mm
Cut-away in outer wall	: 350x110 mm
Max. depth	: 160mm-200mm
Connection	: Top 2x 25mm Bottom tube 40 mm
Fixing	: With 3 brackets
Lock	: Stainless steel triangle lock
Inside suited with	: Sliding rails incl. nuts

Packing

Packed in airfoil, window and box packed separately
5 weeks delivery period

Can be combined with

5L9961: Triangle key 10mm

Use

To be mounted in the wall

ELEQ bv
Tukseweg 130
8331 LH Steenwijk (NL)
T: +31 (0) 521 533 333
F: +31 (0) 521 533 391
www.eleq.com